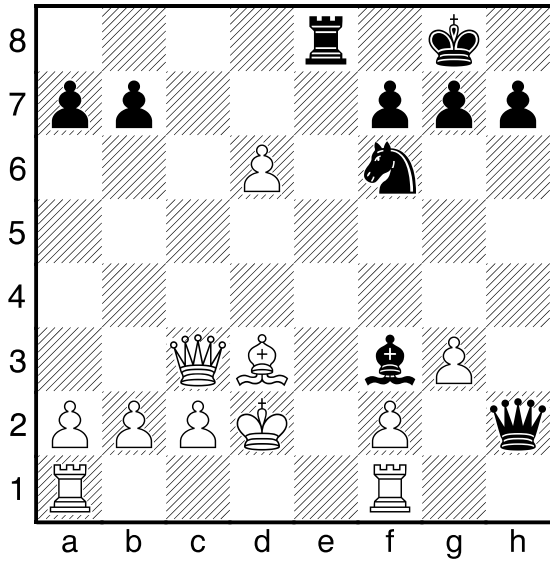
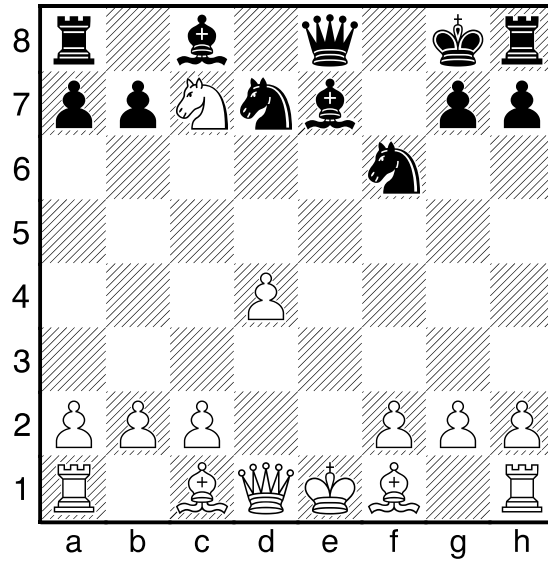


1. Black to Move & Mate in 1



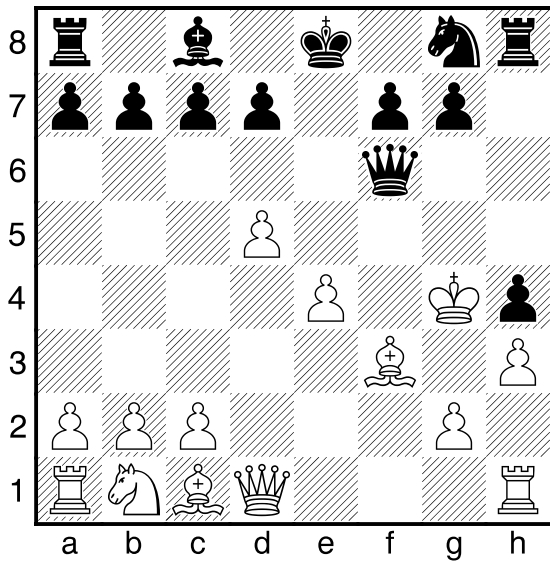
●
1

3. Black to Move & Mate in 1



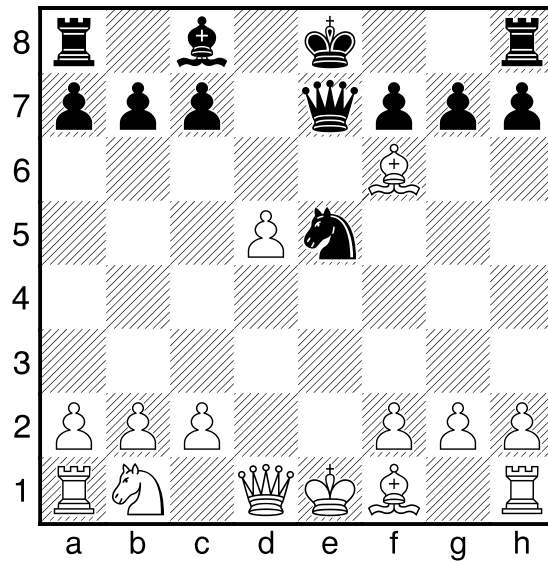
●
3

2. Black to move & Mate in 1



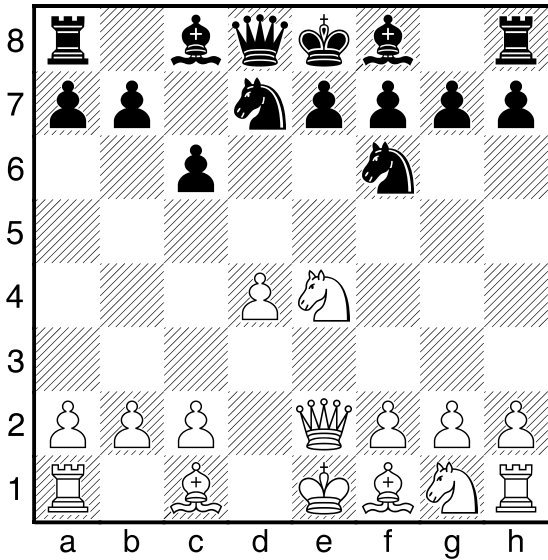
●
2

4. Black to Move & Mate in 1



●
4

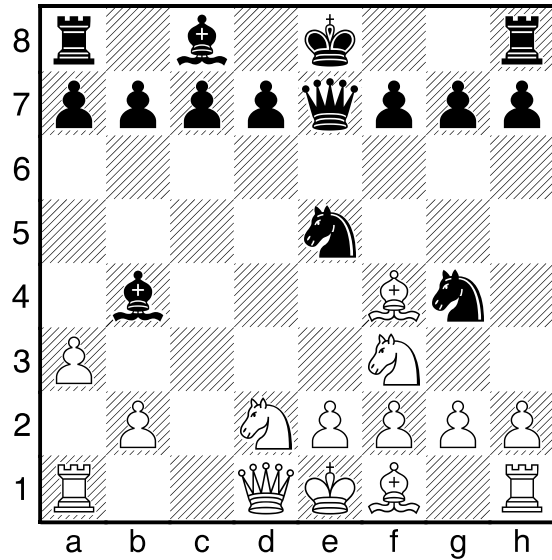
5. White to Move & Mate in 1



5



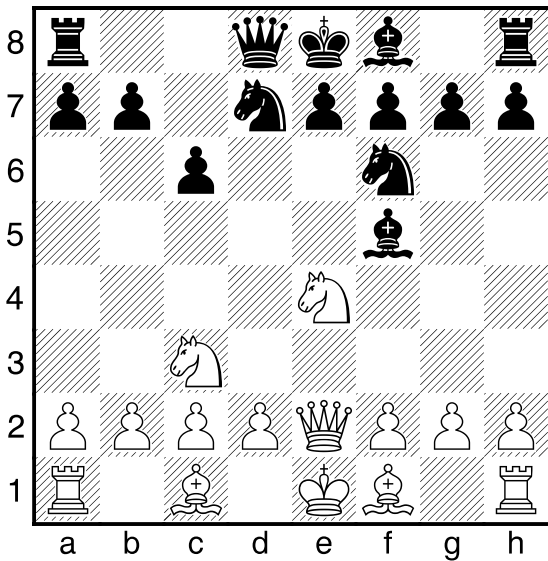
7. Black to Move & Mate in 1



7



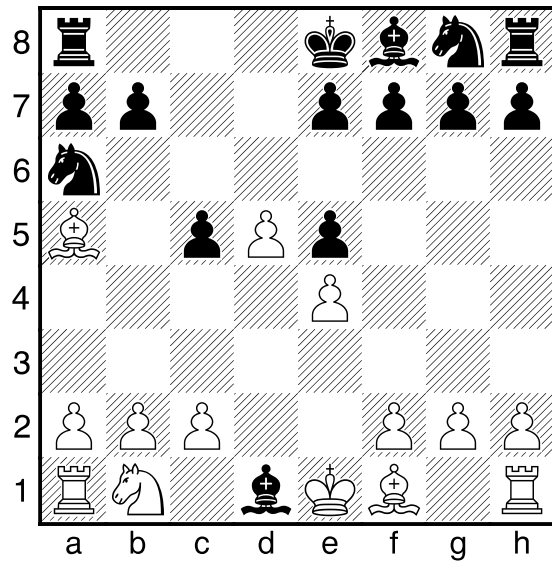
6. White to Move & Mate in 1



6



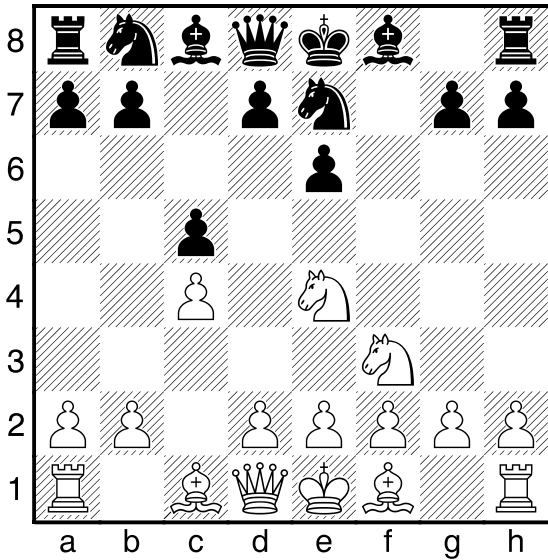
8. White to Move & Mate in 1



8



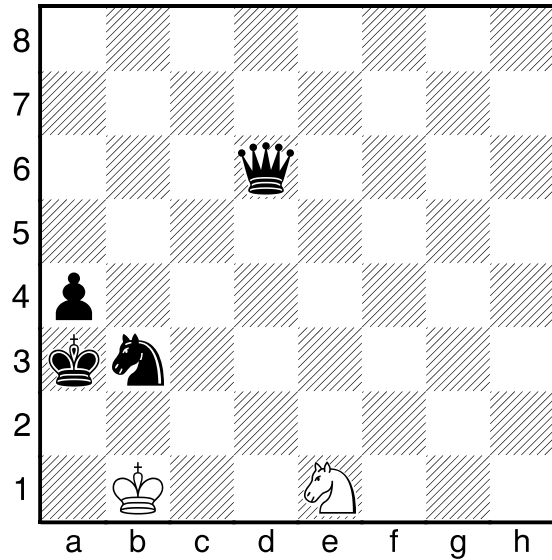
9. White to Move & Mate in 1



9



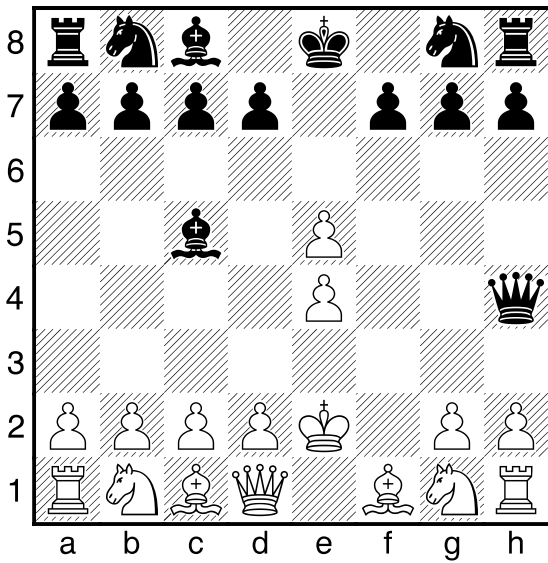
11. White to Move & Mate in 1



11

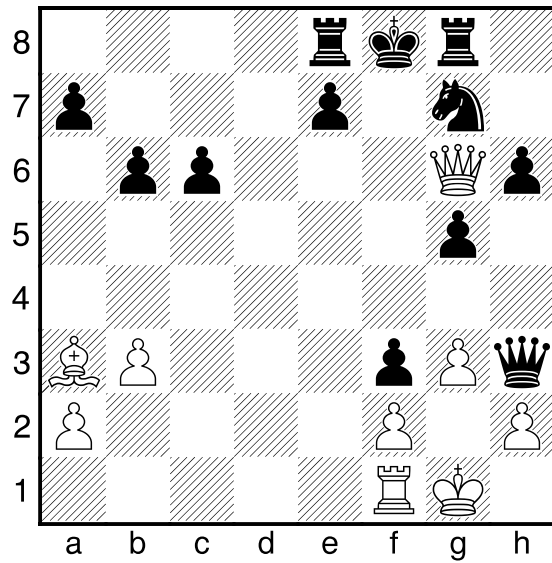


10. Black to Move & Mate in 1



10

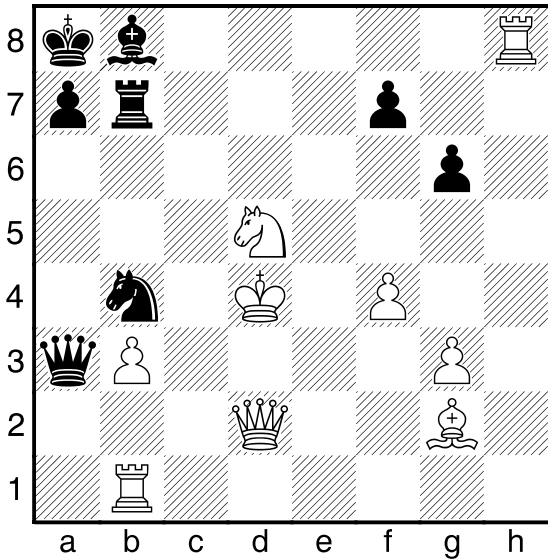
12. White to Move & Mate in 1



12



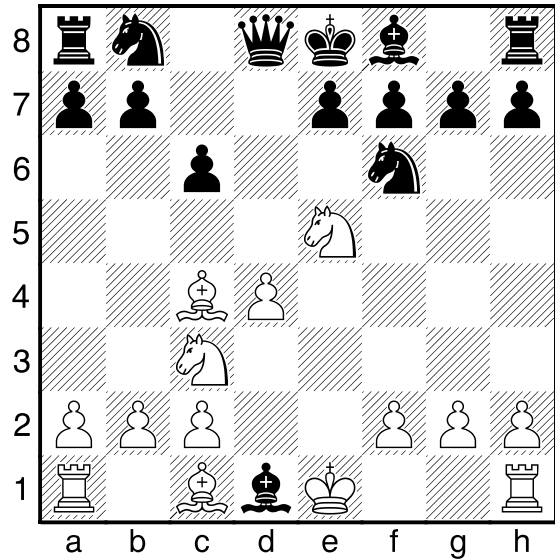
13. White to Move & Mate in 1



13



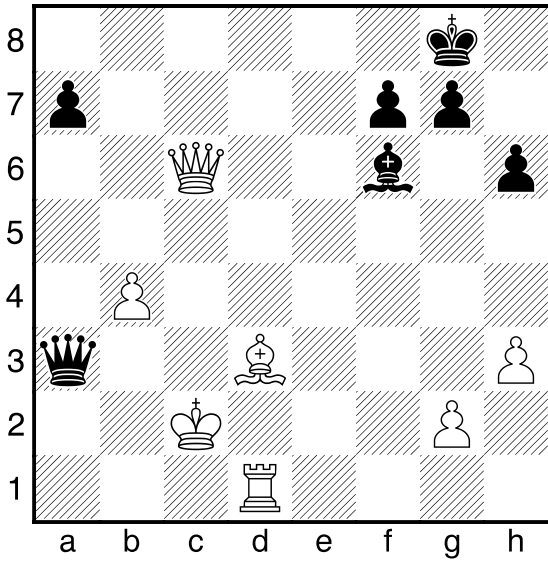
15. White to Move & Mate in 1



15



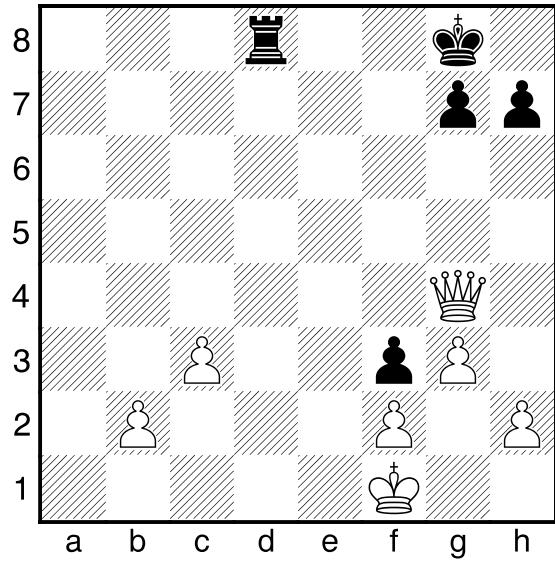
14. Black to Move & Mate in 1



14



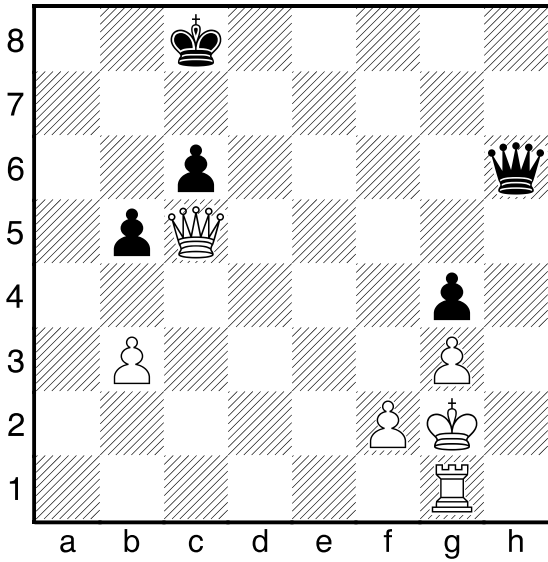
16. Black to Move & Mate in 1



16

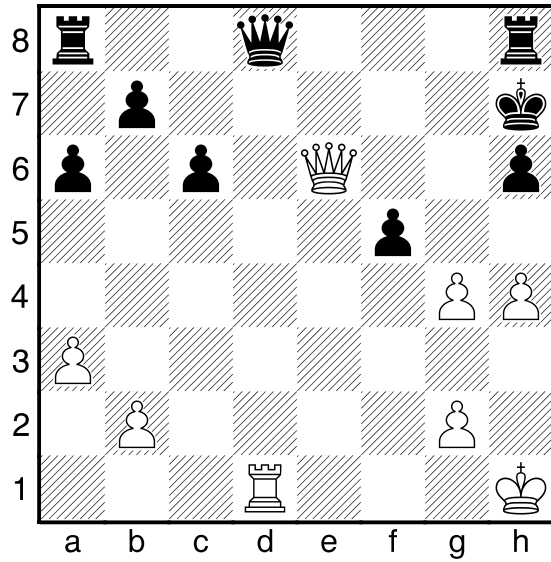


17. Black to Move & Mate in 1



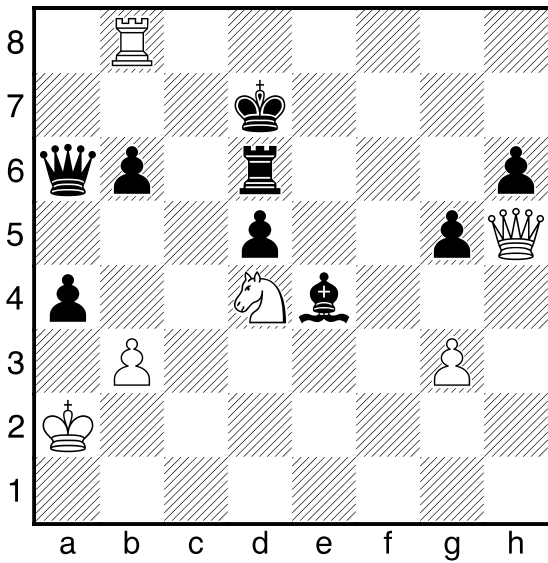
●
17

19. White to Move & Mate in 1



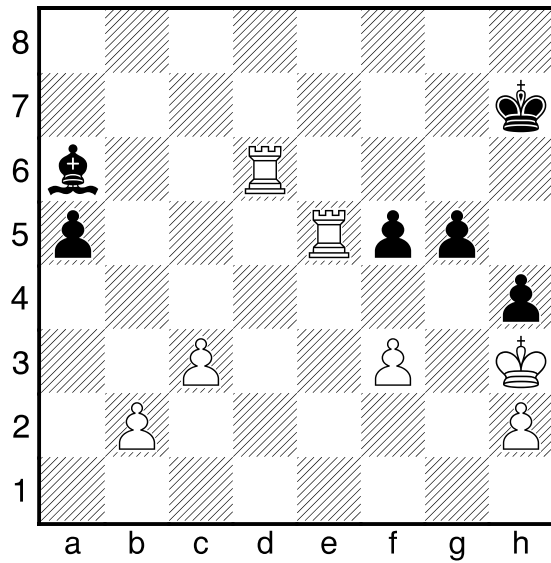
19
○

18. White to Move & Mate in 1



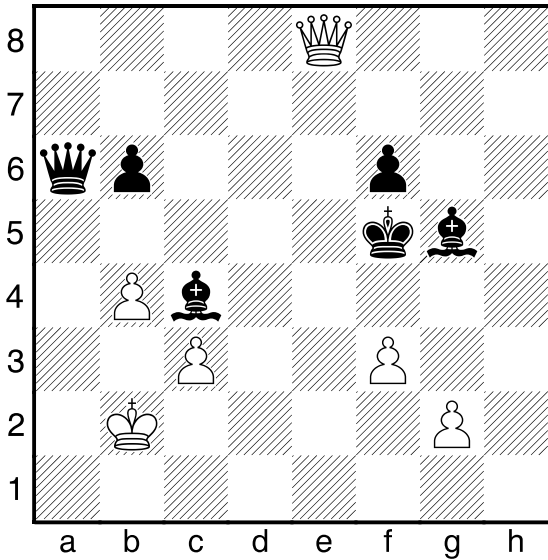
18
○

20. Black to Move & Mate in 1



●
20

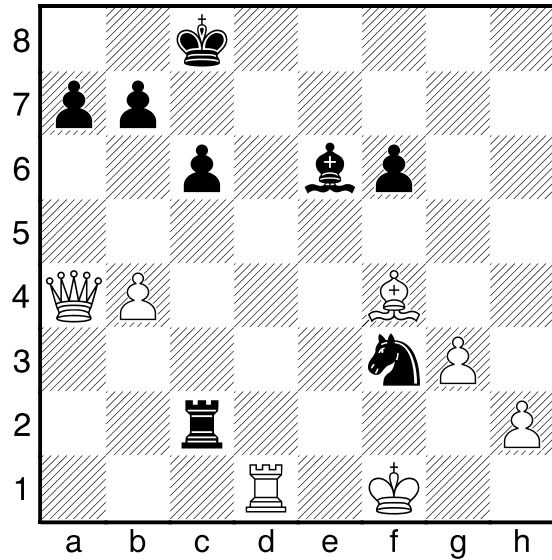
21. White to Move & Mate in 1



21



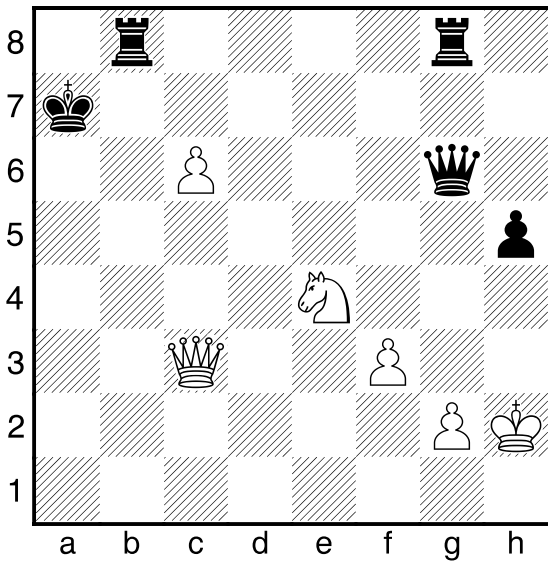
23. Black to Move & Mate in 1



23



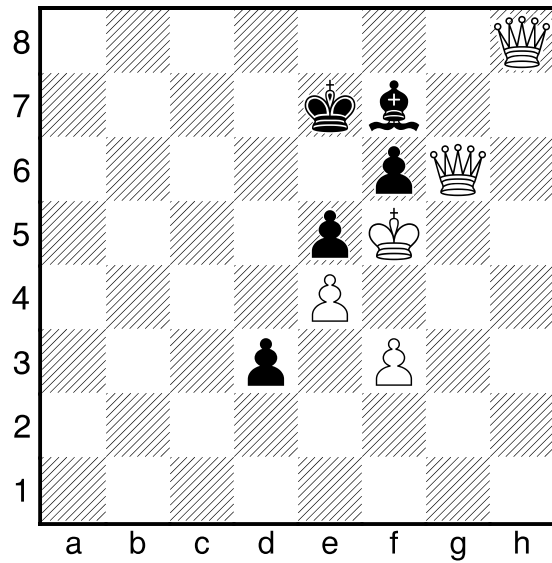
22. White to Move & Mate in 1



22



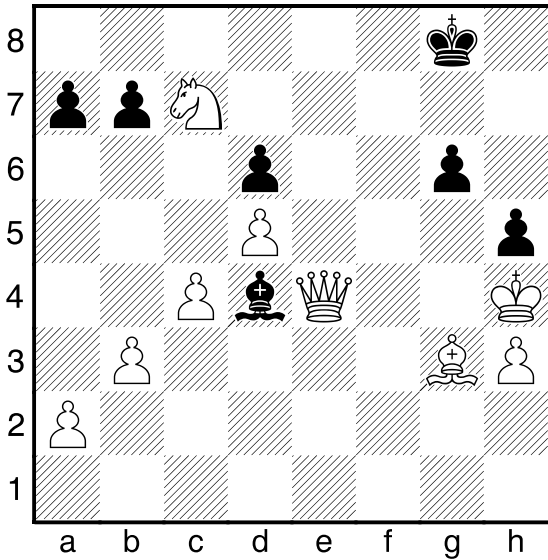
24. Black to Move & Mate in 1



24

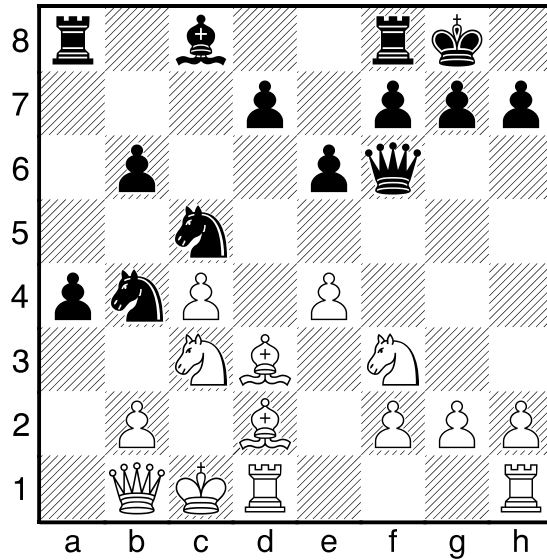


25. Black to Move & Mate in 1



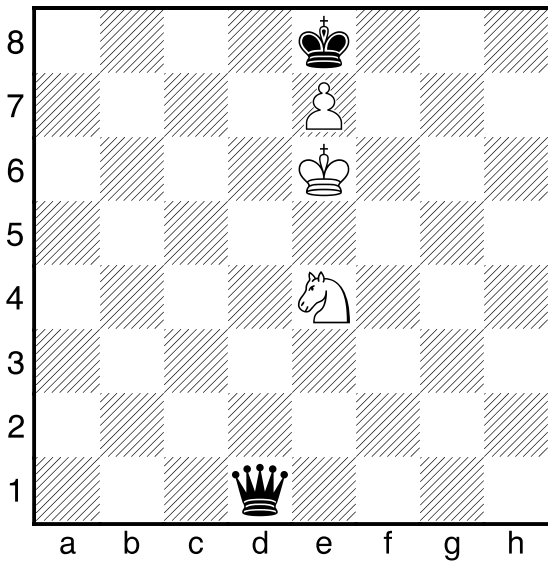
●
25

27. Black to Move & Mate in 1



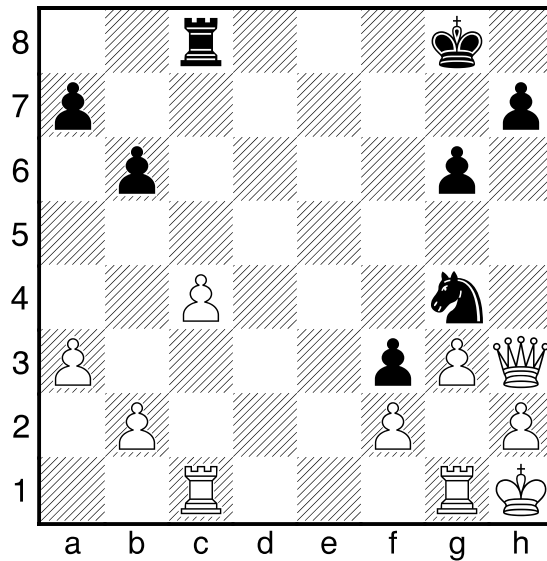
●
27

26. White to Move & Mate in 1



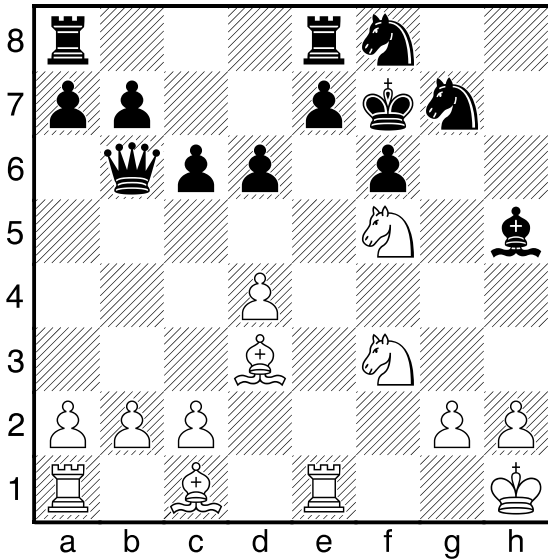
○
26

28. Black to Move & Mate in 1



●
28

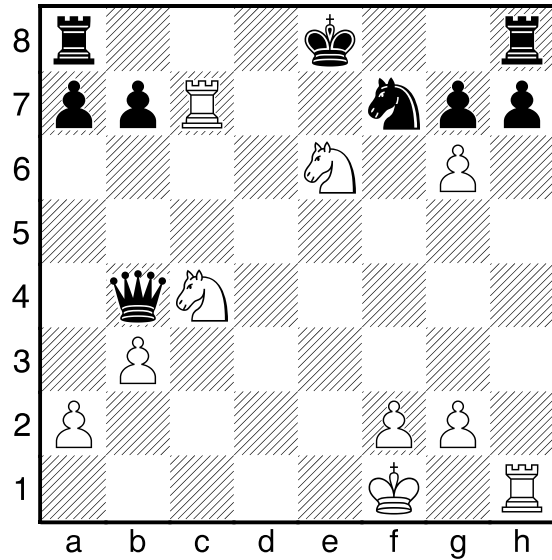
29. White to Move & Mate in 1



29



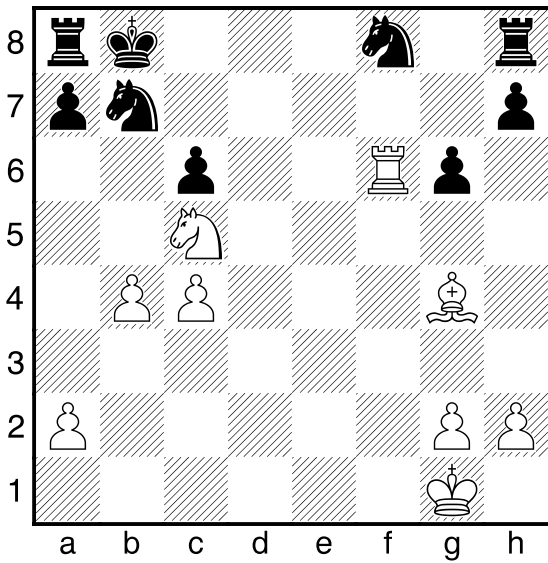
31. White to Move & Mate in 1



31



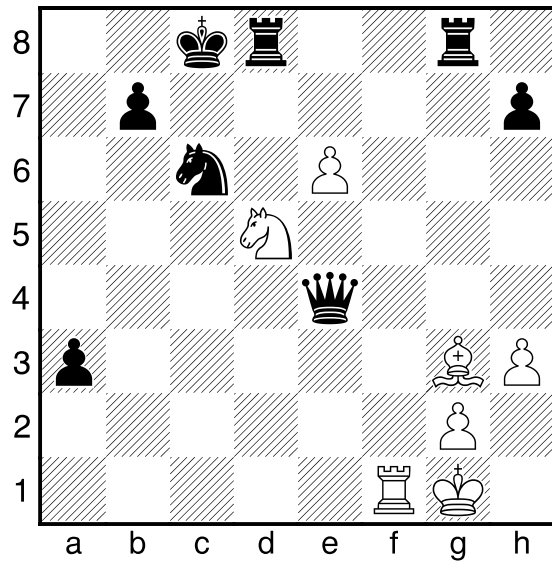
30. White to Move & Mate in 1



30



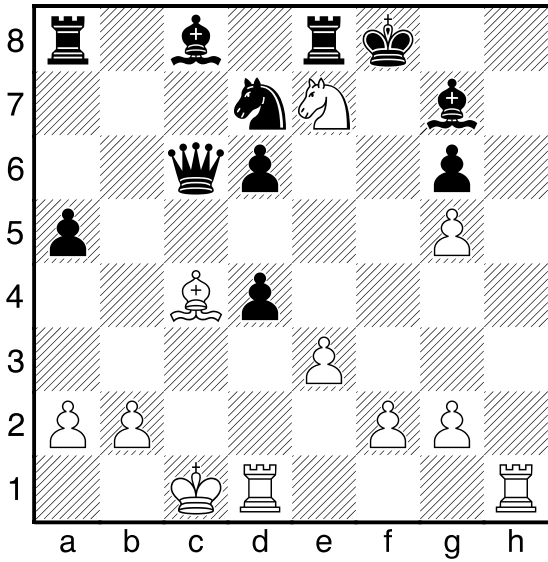
32. White to Move & Mate in 1



32



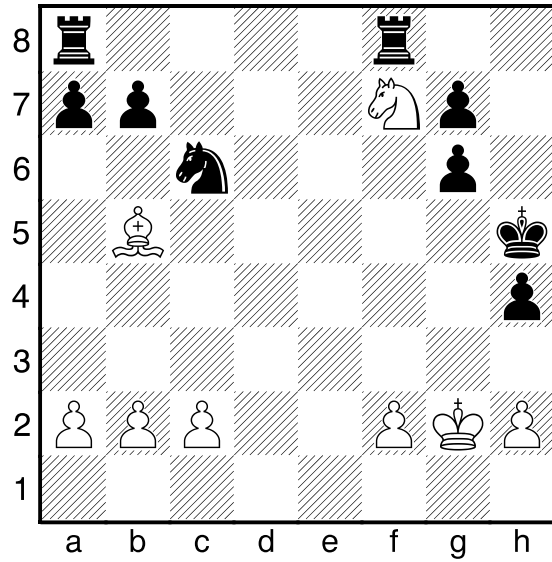
33. White to Move & Mate in 1



33



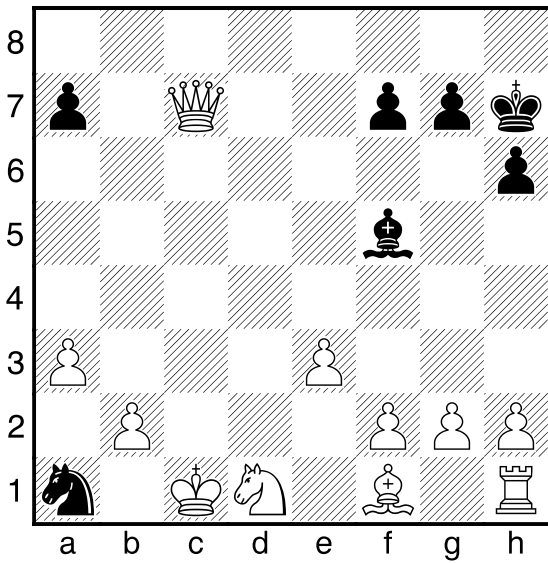
35. White to Move & Mate in 1



35



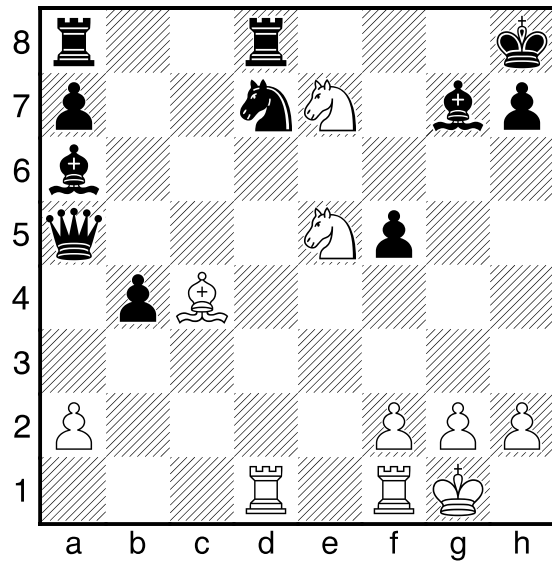
34. Black to Move & Mate in 1



34



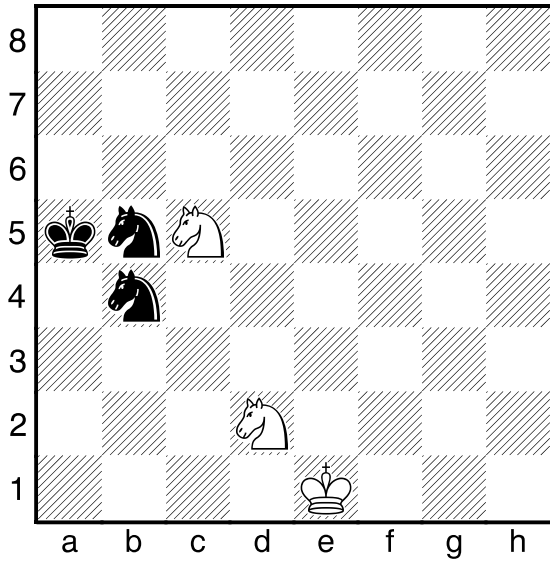
36. White to Move & Mate in 1



36



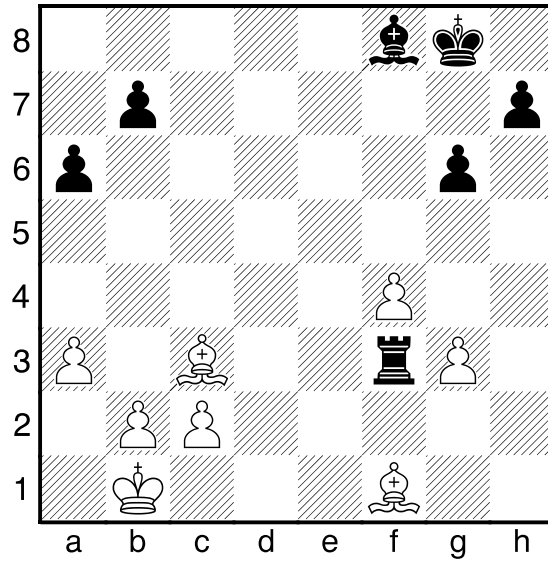
37. White to Move & Mate in 1



37



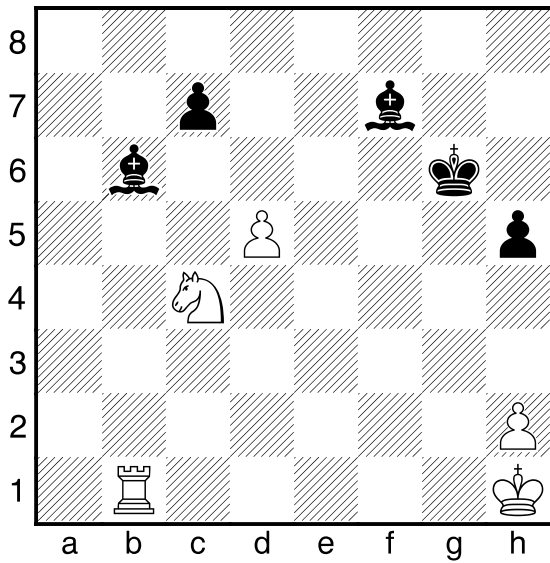
39. White to Move & Mate in 1



39

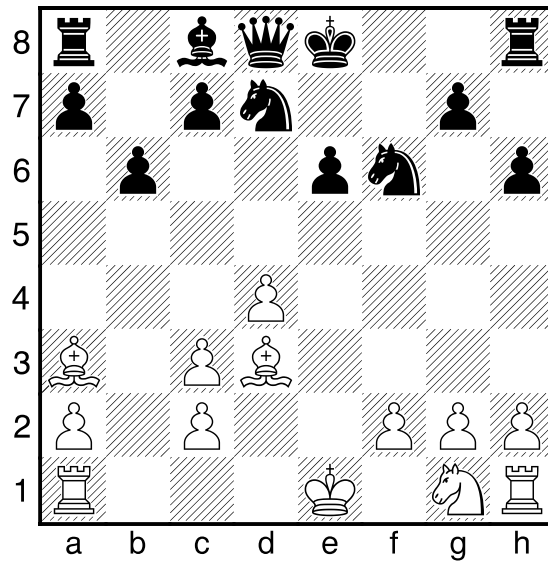


38. Black to Move & Mate in 1



38

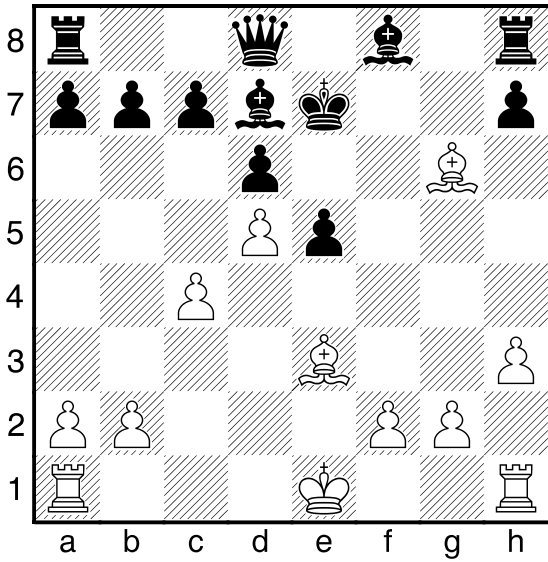
40. White to Move & Mate in 1



40



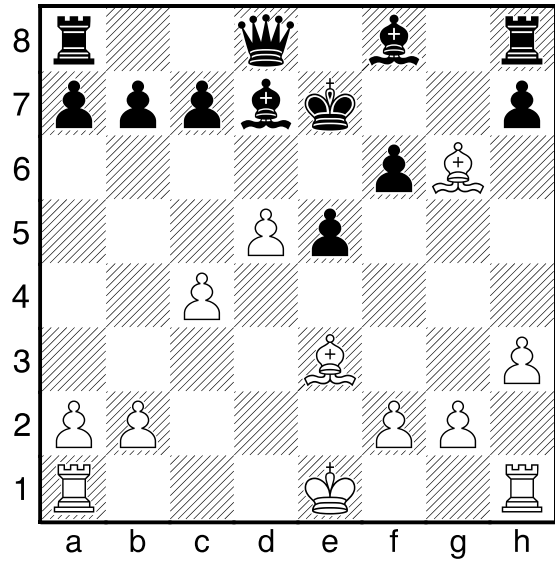
41. White to Move & Mate in 1



41



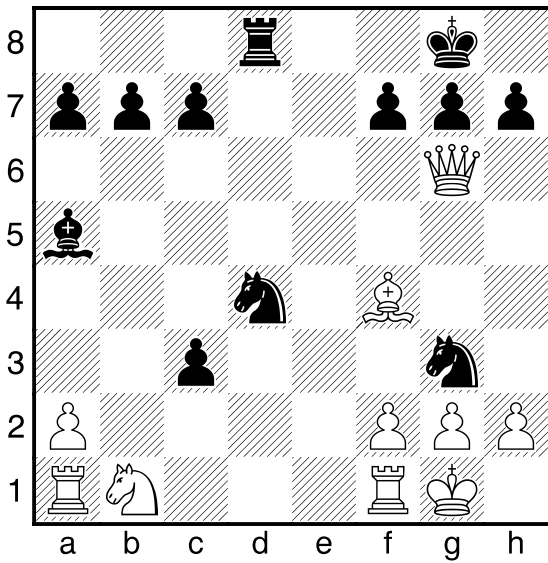
43. White to Move & Mate in 1



43



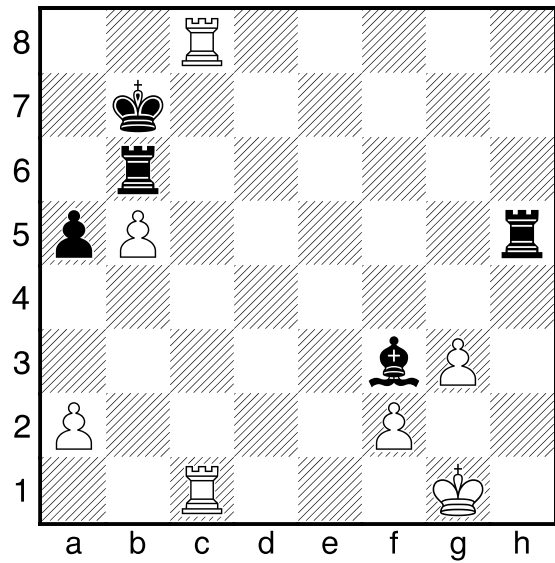
42. Black to Move & Mate in 1



42



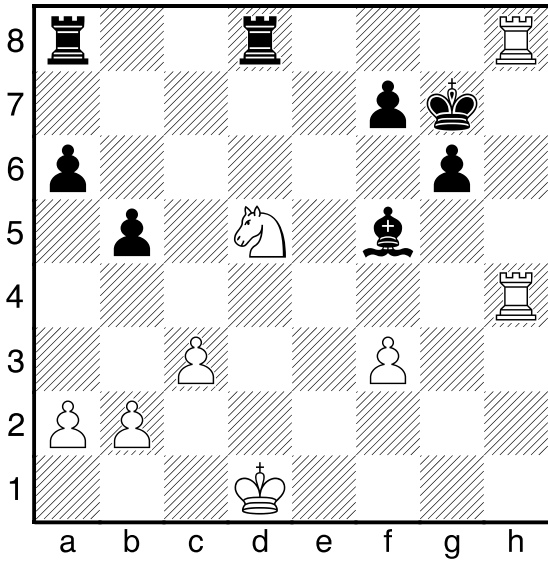
44. White to Move & Mate in 1



44



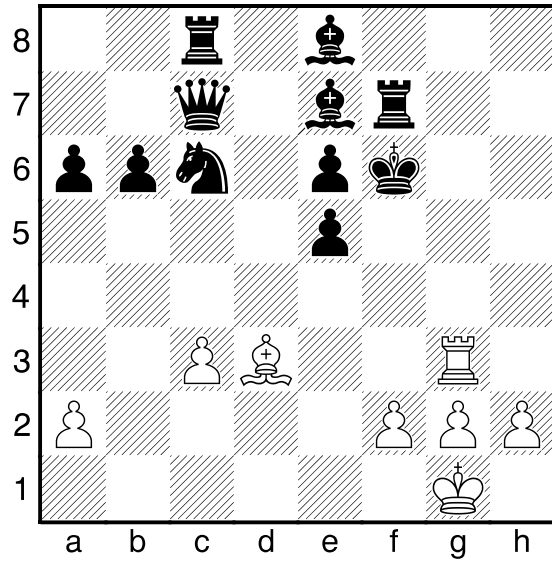
45. White to Move & Mate in 1



45



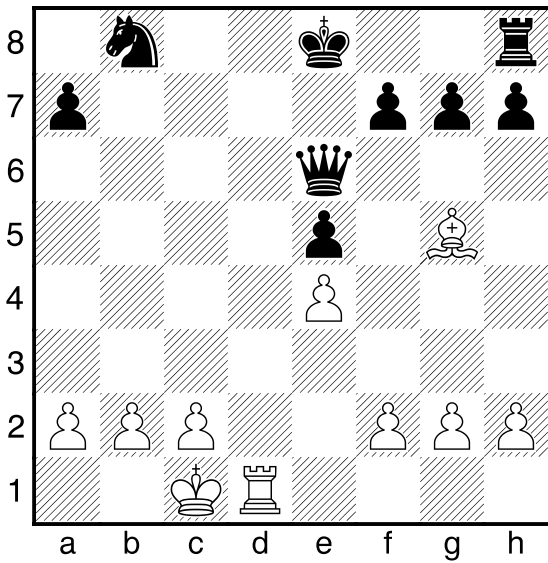
47. White to Move & Mate in 1



47



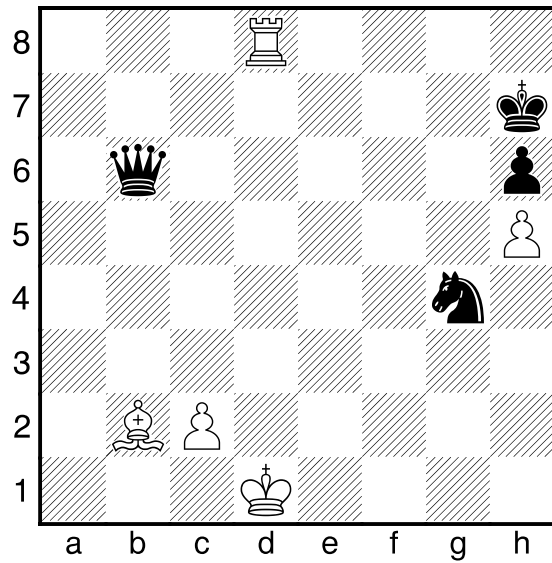
46. White to Move & Mate in 1



46



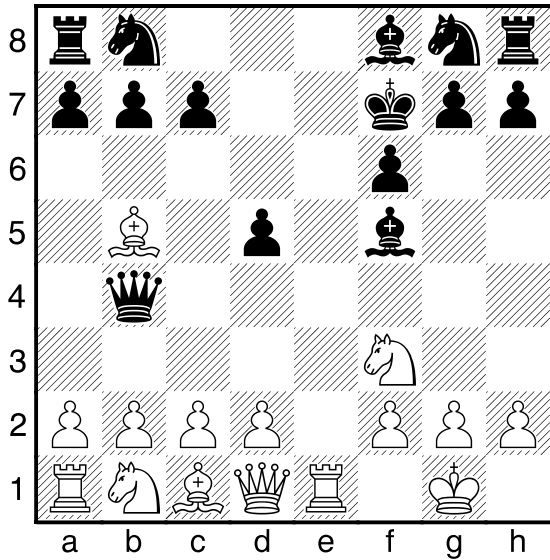
48. White to Move & Mate in 1



48



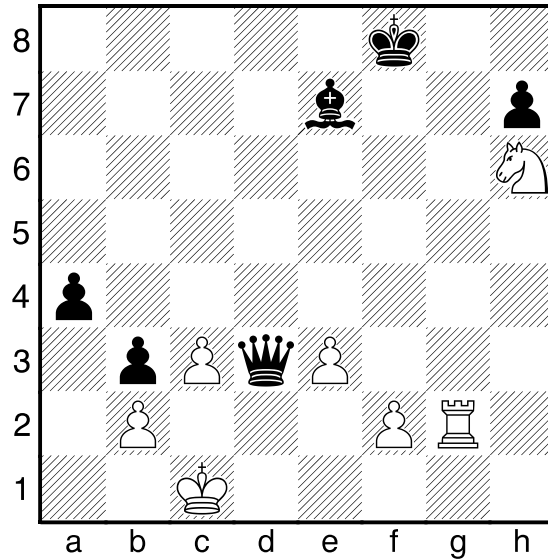
49. White to Move & Mate in 1



49



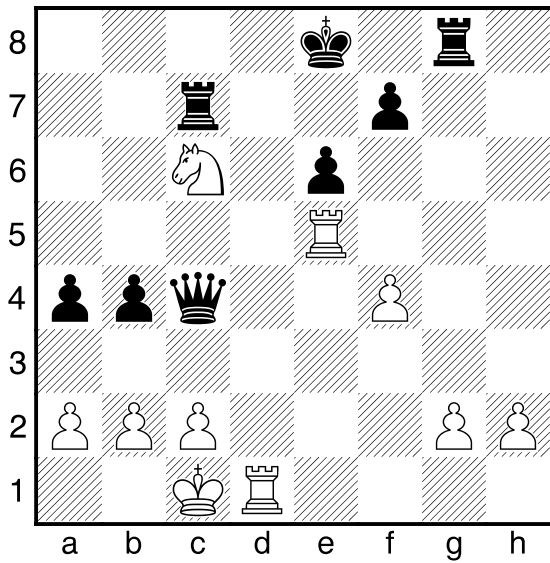
51. White to Move & Mate in 1



51



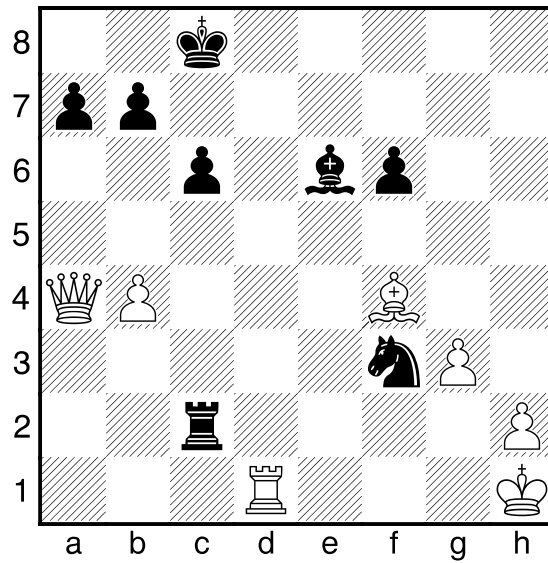
50. White to Move & Mate in 1



50



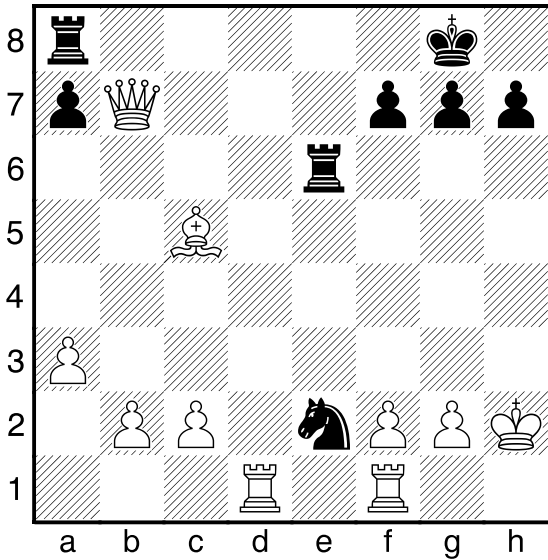
52. Black to Move & Mate in 1



52

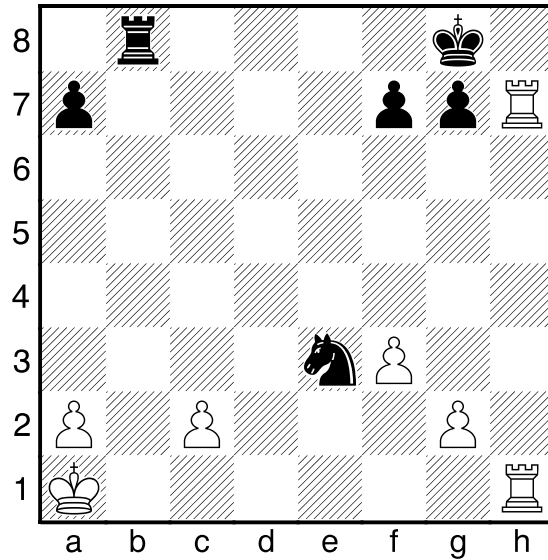


53. Black to Move & Mate in 1



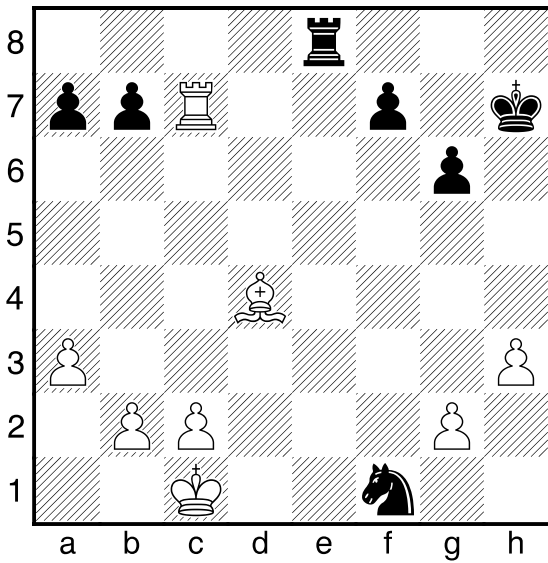
●
53

55. Black to Move & Mate in 1



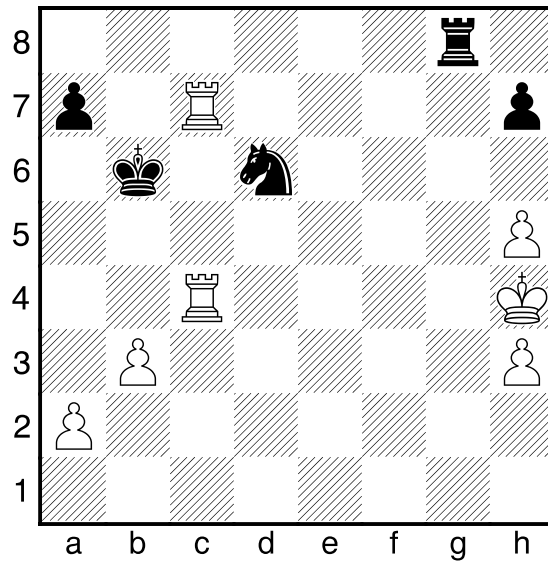
●
55

54. Black to Move & Mate in 1



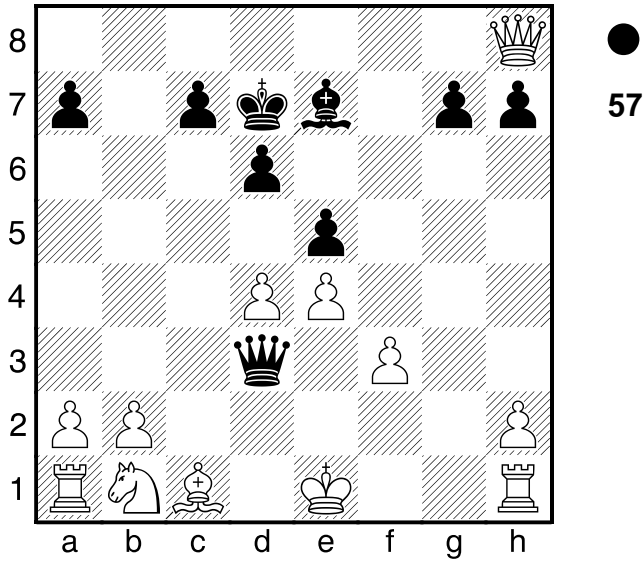
●
54

56. Black to Move & Mate in 1

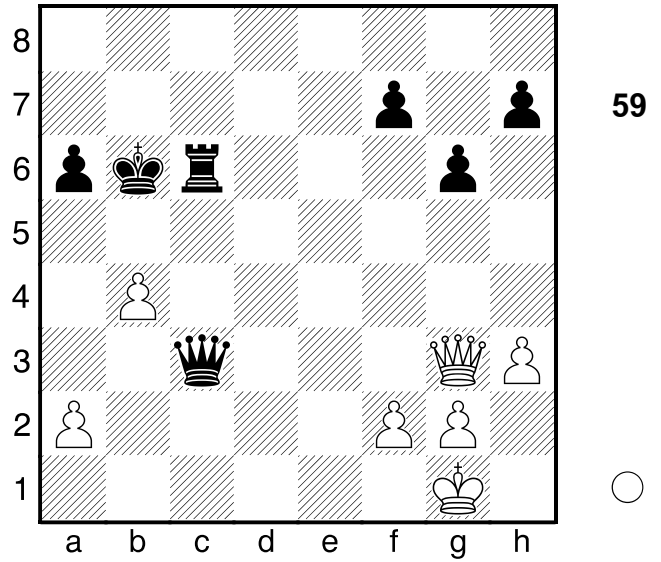


●
56

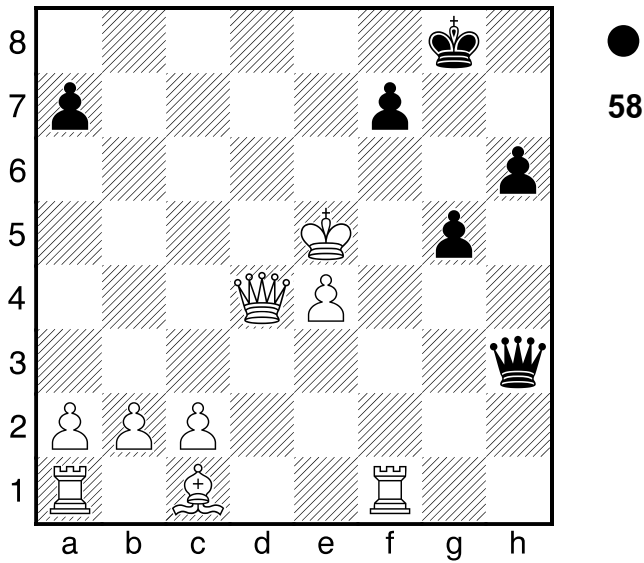
57. Black to Move & Mate in 1



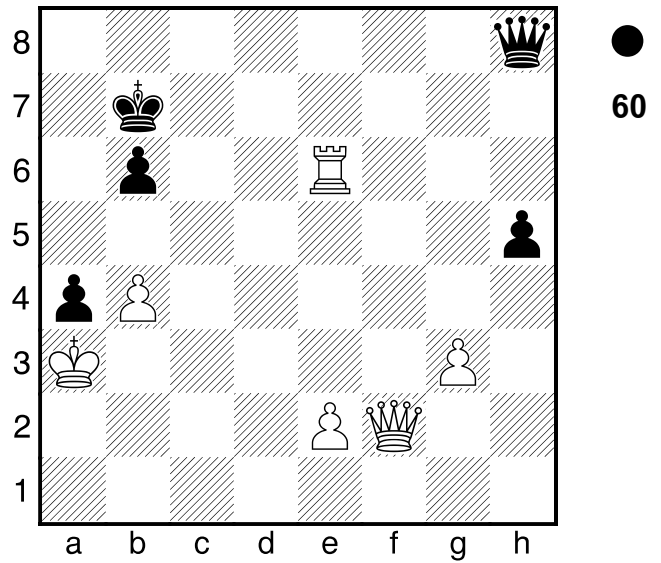
59. White to Move & Mate in 1



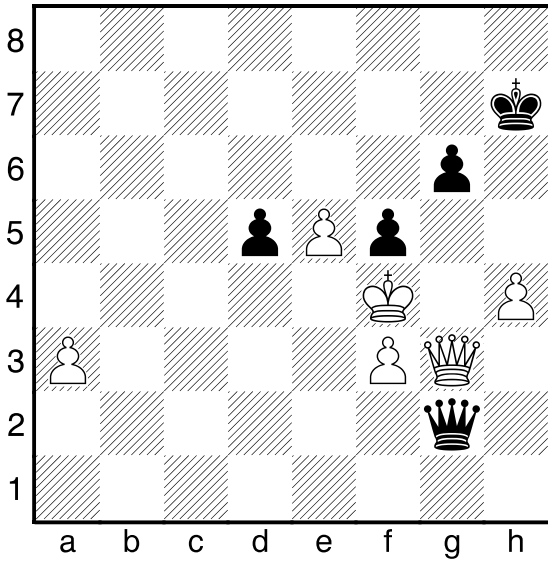
58. Black to Move & Mate in 1



60. Black to Move & Mate in 1

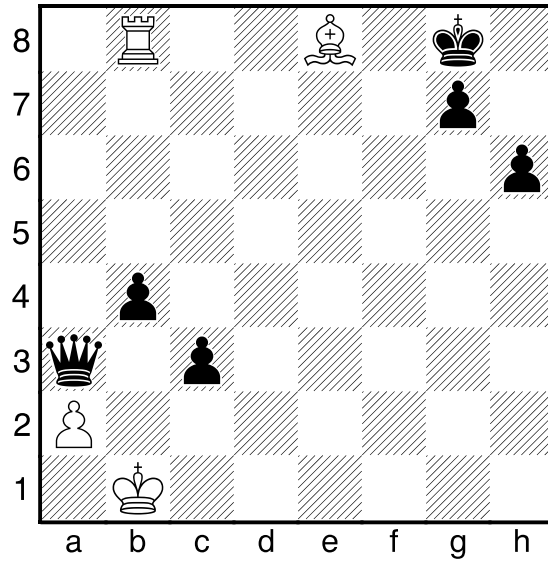


61. Black to Move & Mate in 1



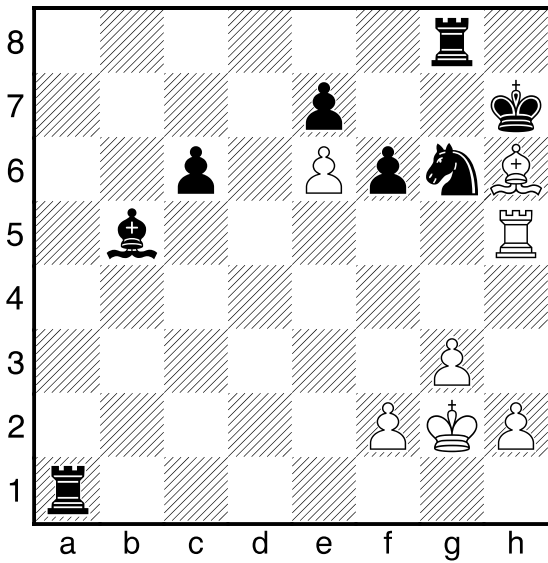
●
61

63. White to Move & Mate in 1



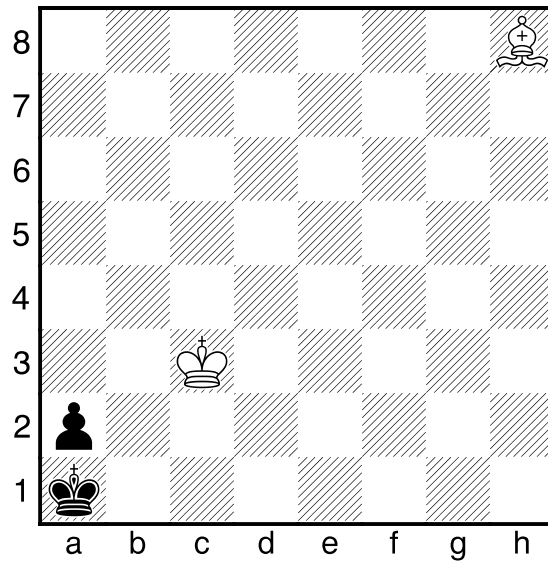
○
63

62. White to Move & Mate in 1



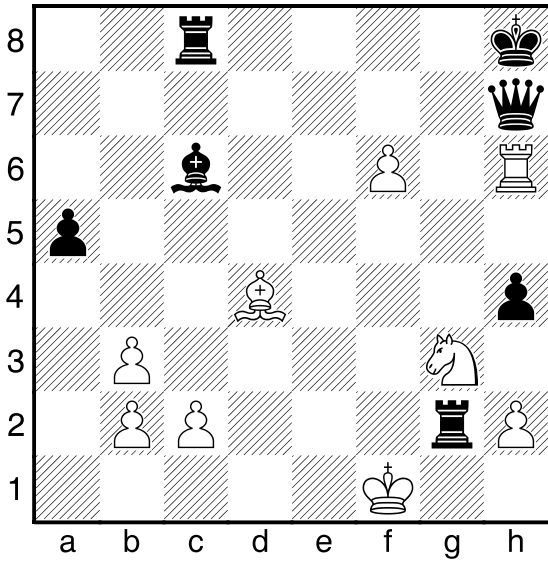
○
62

64. White to Move & Mate in 1



○
64

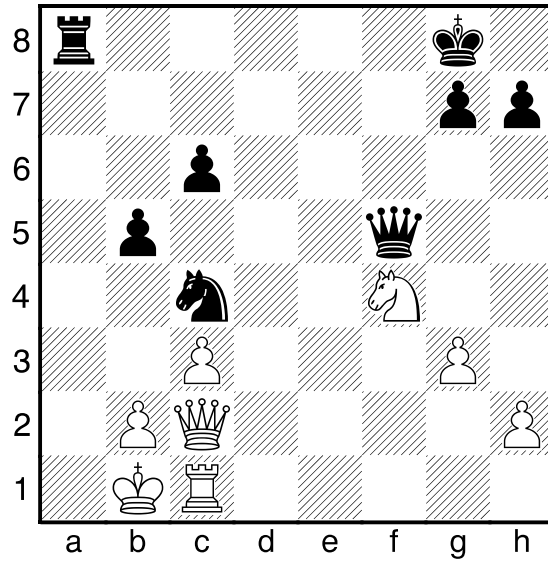
65. White to Move & Mate in 1



65



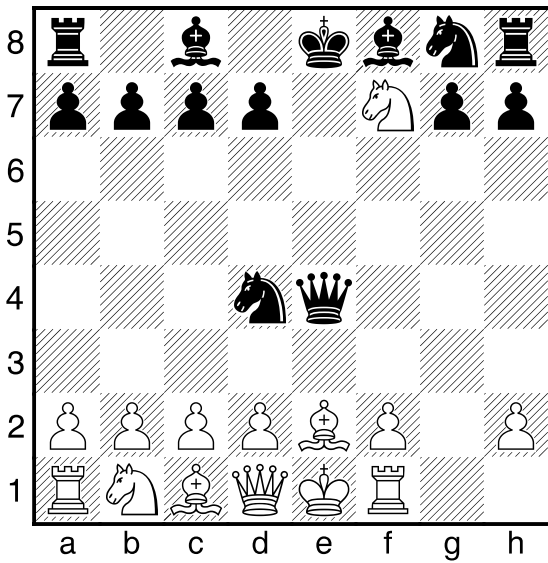
67. Black to Move & Mate in 1



67



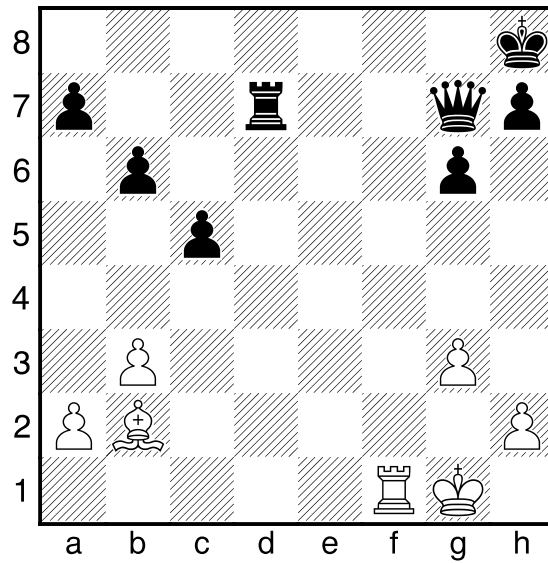
66. Black to Move & Mate in 1



66



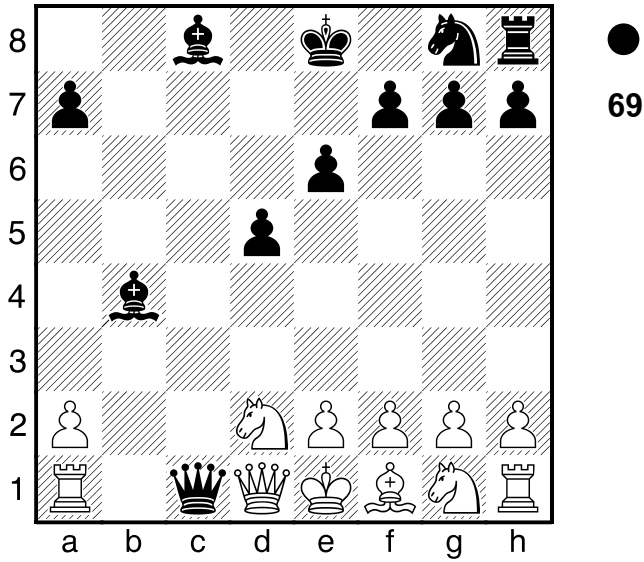
68. White to Move & Mate in 1



68

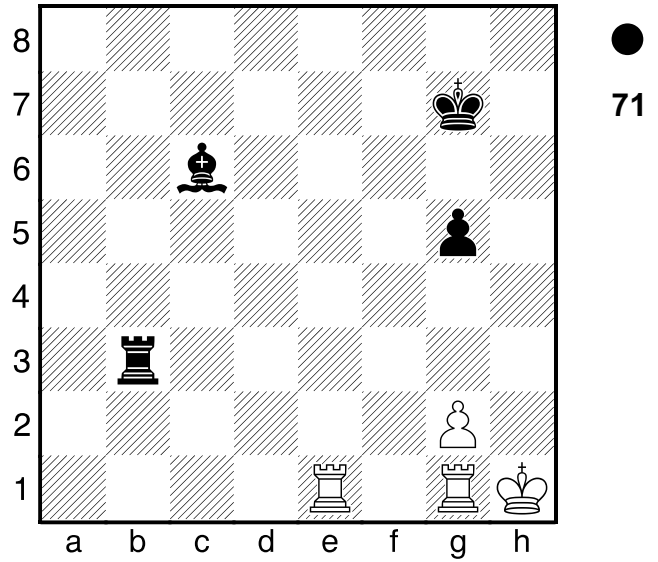


69. Black to Move & Mate in 1



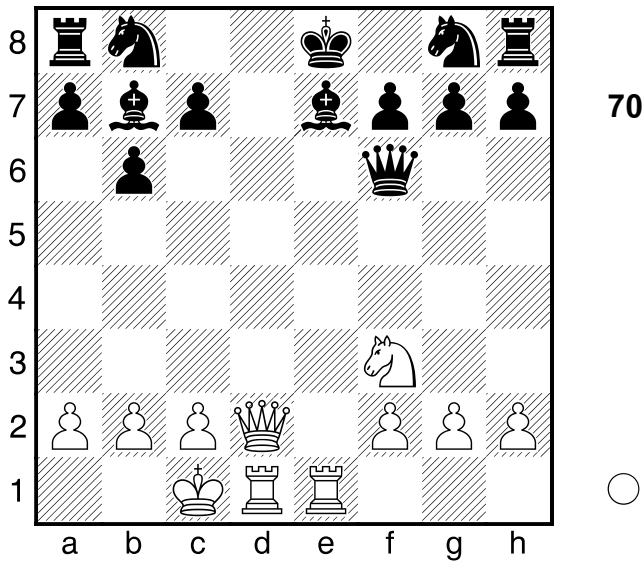
●
69

71. Black to Move & Mate in 1



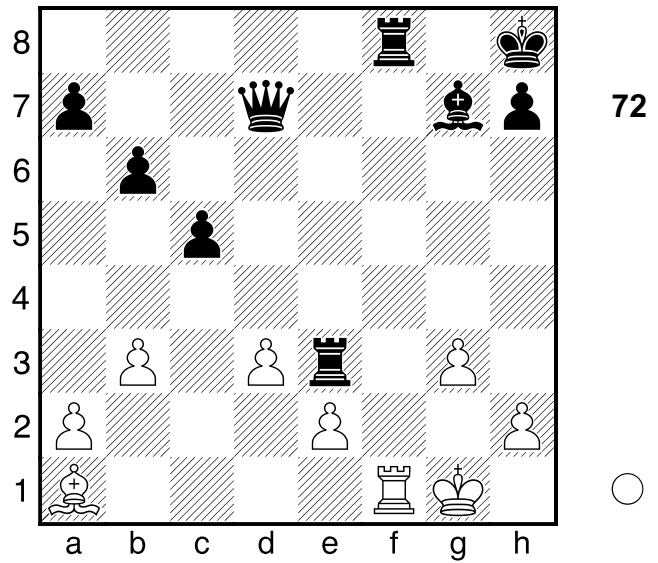
●
71

70. White to Move & Mate in 1



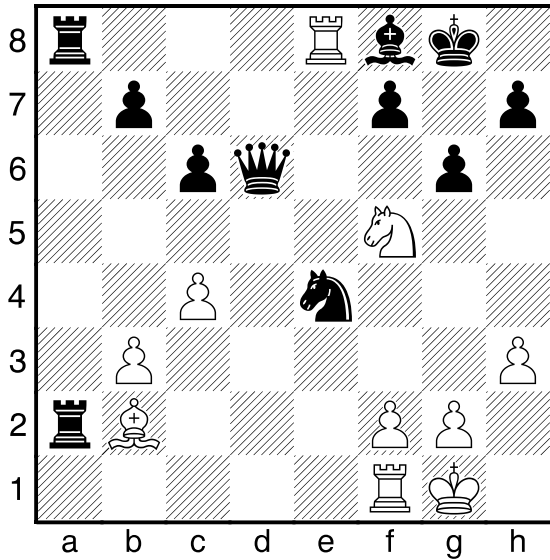
○
70

72. White to Move & Mate in 1



○
72

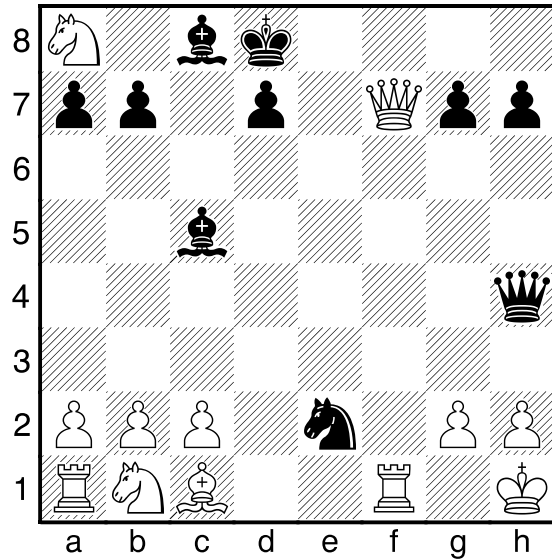
73. White to Move & Mate in 1



73

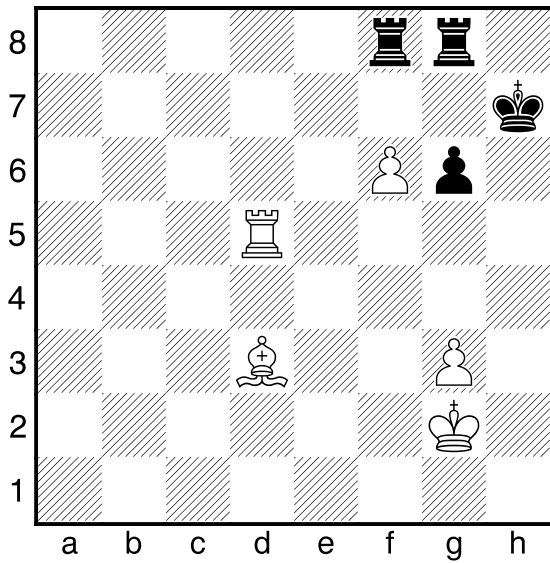


75. Black to Move & Mate in 1



75

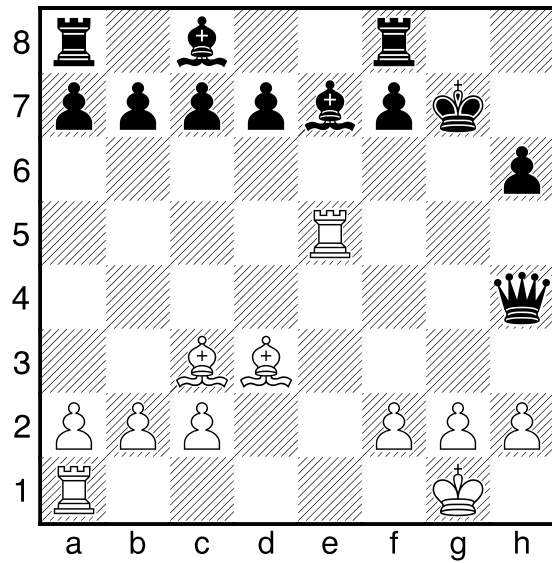
74. White to Move & Mate in 1



74



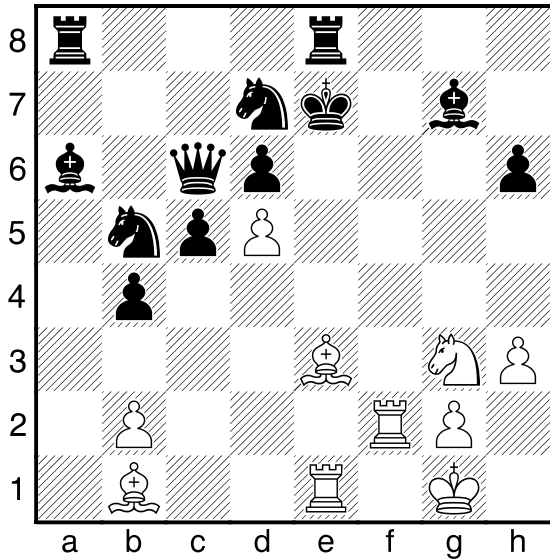
76. White to Move & Mate in 1



76



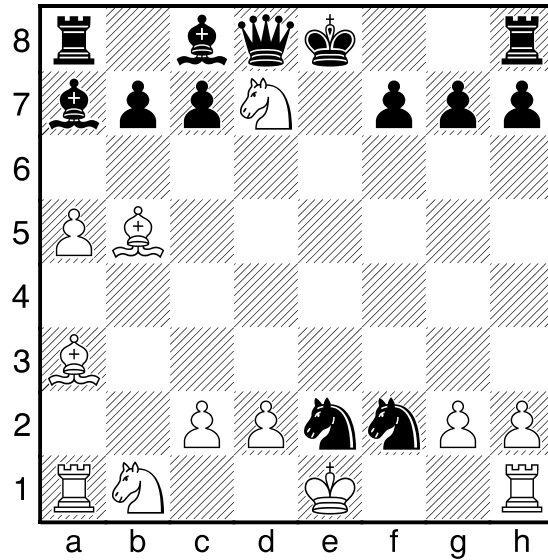
77. White to Move & Mate in 1



77



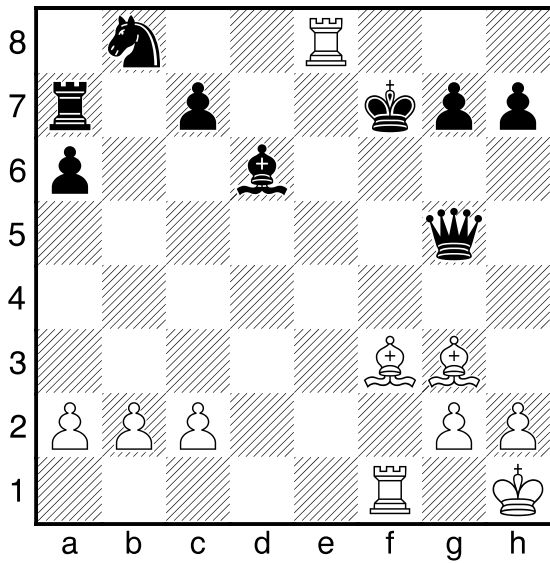
79. White to Move & Mate in 1



79



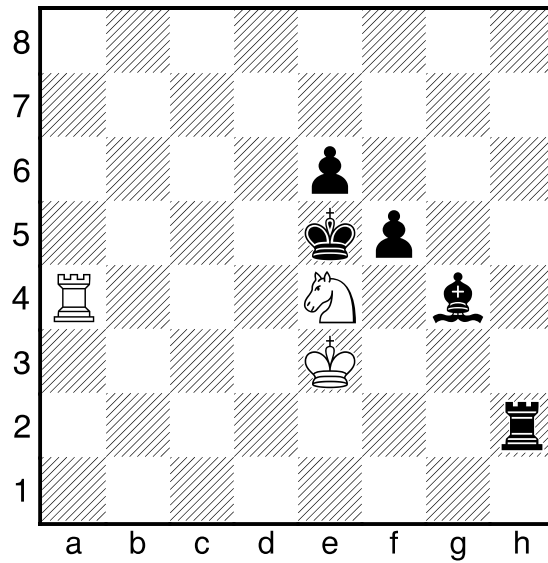
78. White to Move & Mate in 1



78



80. White to Move & Mate in 1



80



1. (1)

1...Qh6# (1):

2. (10)

1...d6# (10):

3. (1)

1...Bb4# (1):

4. (1)

1...Nf3# (1):

5. (1)

1.Nd6# (1):

6. (1)

1.Nd6# (1):

7. (1)

1...Nd3# (1):

8. (10)

2.Bb5# (10):

9. (10)

1.Nd6# (10):

10. (1)

4...Qxe4# (1):

11. (1)

1.Nc2# (1):

12. (1)

1.Qf6# (1):

13. (1)

1.Nc7# (1):

14. (1)

1...Qb2# (1):

15. (1)

1.Bxf7# (1):

16. (1)

1...Rd1# (1):

17. (1)

1...Qh3# (1):

18. (1)

1.Qf7# (1):

19. (1)

1.Qf7# (1):

20. (1)

1...Bf1# (1):

21. (1)**1.Qe4# (1):****22. (1)****1.Qa5# (1):****23. (1)****1...Bh3# (1):****24. (1)****1...Be6# (1):****25. (1)****1...Bf6# (1):****26. (1)****1.Nf6# (1):****27. (1)****1...Nb3# (1):****28. (1)****1...Nxf2# (1):****29. (1)****1.Nh6# (1):****30. (1)****1.Na6# (1):****31. (1)****1.gxf7# (1):****32. (1)****1.Nb6# (1):****33. (1)****1.Nxg6# (1):****34. (1)****1...Nb3# (1):****35. (1)****1.Be2# (1):****36. (1)****1.Nf7# (1):****37. (1)****1.Nc4# (1):****38. (1)****1...Bxd5# (1):****39. (1)****1.Bc4# (1):****40. (1)****1.Bg6# (1):**

41. (1)

1.Bg5# (1):

42. (1)

1...Nde2# (1):

43. (1)

1.Bc5# (1):

44. (1)

1.R1c7# (1):

45. (1)

1.R4h7# (1):

46. (1)

1.Rd8# (1):

47. (1)

1.Rg6# (1):

48. (1)

1.Rh8# (1):

49. (1)

1.Be8# (1):

50. (1)

1.Rd8# (1):

51. (1)

1.Rg8# (1):

52. (1)

1...Rxh2# (1):

53. (1)

1...Rh6# (1):

54. (1)

1...Re1# (1):

55. (1)

1...Nxc2# (1):

56. (1)

1...Nf5# (1):

57. (1)

1...Bh4# (1):

58. (1)

1...Qe6# (1):

59. (1)

1.Qb8# (1):

60. (1)

1...Qa1# (1):

61. (1)**1...Qd2# (1):****62. (1)****1.Bf8# (1):****63. (1)****1.Bg6# (1):****64. (1)****1.Kc2# (1):****65. (1)****1.f7# (1):****66. (1)****1...Nf3# (1):****67. (1)****1...Nd2# (1):****68. (1)****1.Rf8# (1):****69. (1)****1...Bxd2# (1):****70. (1)****1.Qd8# (1):****71. (1)****1...Rh3# (1):****72. (1)****1.Rxf8# (1):****73. (1)****1.Nh6# (1):****74. (1)****1.Rh5# (1):****75. (1)****1...Ng3# (1):****76. (1)****1.Rg5# (1):****77. (1)****1.Bg5# (1):****78. (1)****1.Bh5# (1):****79. (1)****1.Nf6# (1):****80. (1)****1.Ra5# (1):**